

AUTOMATED METHODS FOR SOLVING LINEAR PROGRAMMING PROBLEMS

S. Khaidarova*

*Candidate of Technical Sciences

Associate Professor of Kokand State Pedagogical Institute, Uzbekistan

E-mail: hay-vb1952@umail.uz

ANNOTATION: This article discusses the issues of using Simplexwin and Optimal 2 programs in solving linear programming problems

KEYWORDS AND EXPRESSIONS: Simplexwin and Optimal 2 programs

INTRODUCTION:

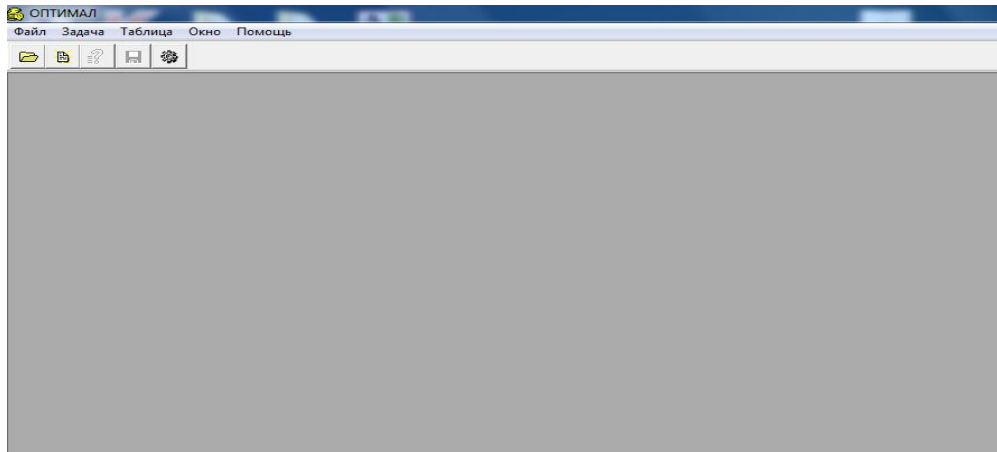
The basis for the implementation of any management task is the adoption of an optimal decision by a specific person. The optimal solution is considered to be such a solution that ensures the achievement of the goal in the conditions under consideration with the maximum effect. Among the set of optimization problems, there are special problems that are called linear programming problems. The first articles on linear programming were published in the USA only in 1949. In them, the American scientist J. Danzig presented his simplex method. In 1949, L.V. Kantorovich and M. K. Gavurin presented the method of potentials for solving the transport problem.

Currently, more convenient automated methods for solving linear programming problems have been developed, which save time for solving.

In work [1], an automated method for solving a transport problem using the “Optimal” program is considered. To solve the problems of optimal use of resources and diet, there is also an automated method, which is considered in [2].

It is known that linear programming problems are divided into 3 parts: the problem optimal use of resources, diet task and transport task. Below is the recommended method for solving the transport problem allows you to save time. One of these methods is the Optimal 2 program.

After starting the Optimal 2 program, the following window appears:



After selecting the “Создать” section the “Файл” menu, the following window appears:

	потребитель В1	потребитель В2	потребитель В3	Запасы груза
поставщик А1	0	0	0	0
поставщик А2	0	0	0	0
поставщик А3	0	0	0	0
Потребности	0	0	0	

In this window, the rows stand for suppliers A1, A2, A3, and the columns for consumers B1, B2, and B3. They form a 3x3 matrix. The last row and the last column show respectively the demand for the cargo and the stocks of the cargo.

The size of the matrix can be changed depending on the state of the task. To do this, select one of the “Добавить строку”, “Добавить колонку”, “Удалить строку”, “Удалить колонку” sections in the “Таблица” menu. They are used to add row and column respectively and also to remove row and column.

Let’s consider an example. Let it be required to solve the following transport task:

There are 3 suppliers A1, A2, A3, which have stocks of cargo in the amount of 130, 100, 170 units, respectively. This cargo needs to be delivered to four consumers B1, B2, B3, B4, who ordered 150, 120, 80, 50 units of this cargo, respectively. The cost of transportation is determined by the following matrix

$$C = \begin{pmatrix} 3 & 5 & 7 & 11 \\ 1 & 4 & 6 & 3 \\ 5 & 8 & 12 & 7 \end{pmatrix}$$

It is required to draw up such a transportation plan in which the total cost of all transportation would be minimal.

By the condition of the problem, the number of suppliers is $m = 3$, and the number of consumers is $n = 4$. Select the “Добавить колонку” section in the “Таблица” menu and enter the data:

The screenshot shows the 'ОПТИМАЛ' software interface. The main window displays a table with the following data:

	потребитель В1	потребитель В2	потребитель В3	потребитель В4	Запасы груза
поставщик А1	3	5	7	11	130
поставщик А2	1	4	6	3	100
поставщик А3	5	8	12	7	170
Потребности	150	120	80	50	

Then we select the “Решить задачу” section in the “Задача” menu and at the 5th stage we will get the following solution.

Поставщик	Потребитель				Запасы груза
	В1	В2	В3	В4	
A1	3 <i>м</i>	5 50 <i>м</i>	7 80 <i>м</i>	11 <i>м</i>	130
A2	1 100 <i>м</i>	4 <i>м</i>	6 <i>м</i>	3 <i>м</i>	100
A3	5 50 <i>м</i>	8 70 <i>м</i>	12 <i>м</i>	7 50 <i>м</i>	170
Потребность	150	120	80	50	

Целевая функция F = 2070

Thus, for $X_{min} = \begin{pmatrix} 0 & 50 & 80 & 0 \\ 100 & 0 & 0 & 0 \\ 50 & 70 & 0 & 50 \end{pmatrix}$ the objective function F takes its minimum

value, i.e. F=2070.

The solution has a matrix form, we can write it in the following form:

$$x_{12} = 50, x_{13} = 80, x_{21} = 100, x_{31} = 50, x_{32} = 70, x_{34} = 50$$

Thus, upon delivery of cargo from supplier A1 to consumer B2 in the amount of 50 units, from supplier A1 to consumer B3 in the amount of 80 units, from supplier A2 to

consumer B1 in the amount of 100 units, from supplier A3 to consumer B2 in the amount of 70 units, from supplier A3 to consumer B4 in the amount of 50 units, the cost of transportation will be minimal.

The tasks of optimal use of resources and diet also have automated methods for solving. The Simplexwin program is one such method that saves time.

CONCLUSION:

The transport problem belongs to linear programming problems, and it could be solved by the potential method or simplex method. But automated methods for solving linear programming problems make it possible instead of using potentials and volumetric simplex tables, use a more convenient method.

References

1. J.T.Beksultanov. Solution of the transport task using the “Optimal” program. <https://www.elibrary.ru>
2. V.Stepanov. Software implementation of a simplex method in Java. Higher mathematics. <http://www.mathelp.spb.ru>

CONFLICT OF INTEREST STATEMENT:

The author declare that the research was conducted in the absence of any commercial or financial relationships that could be construed as a potential conflict of interest.